



Priorities, Programming, & Reporting



BC Ministry of Agriculture and Food
By Greg Rekken
Team Lead, Mitigation and Soil Health



Ministry of
Agriculture
and Food



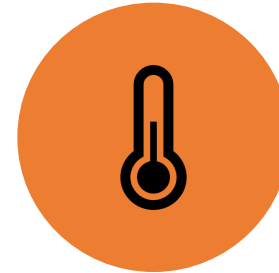
S-CAP Climate Change and Environment

Priorities:

- Tackling climate change and environmental protection to support GHG emission reductions and long-term vitality of the sector
- Positioning producers and processors to seize economic opportunities from evolving consumer demands



Reducing net GHG emissions



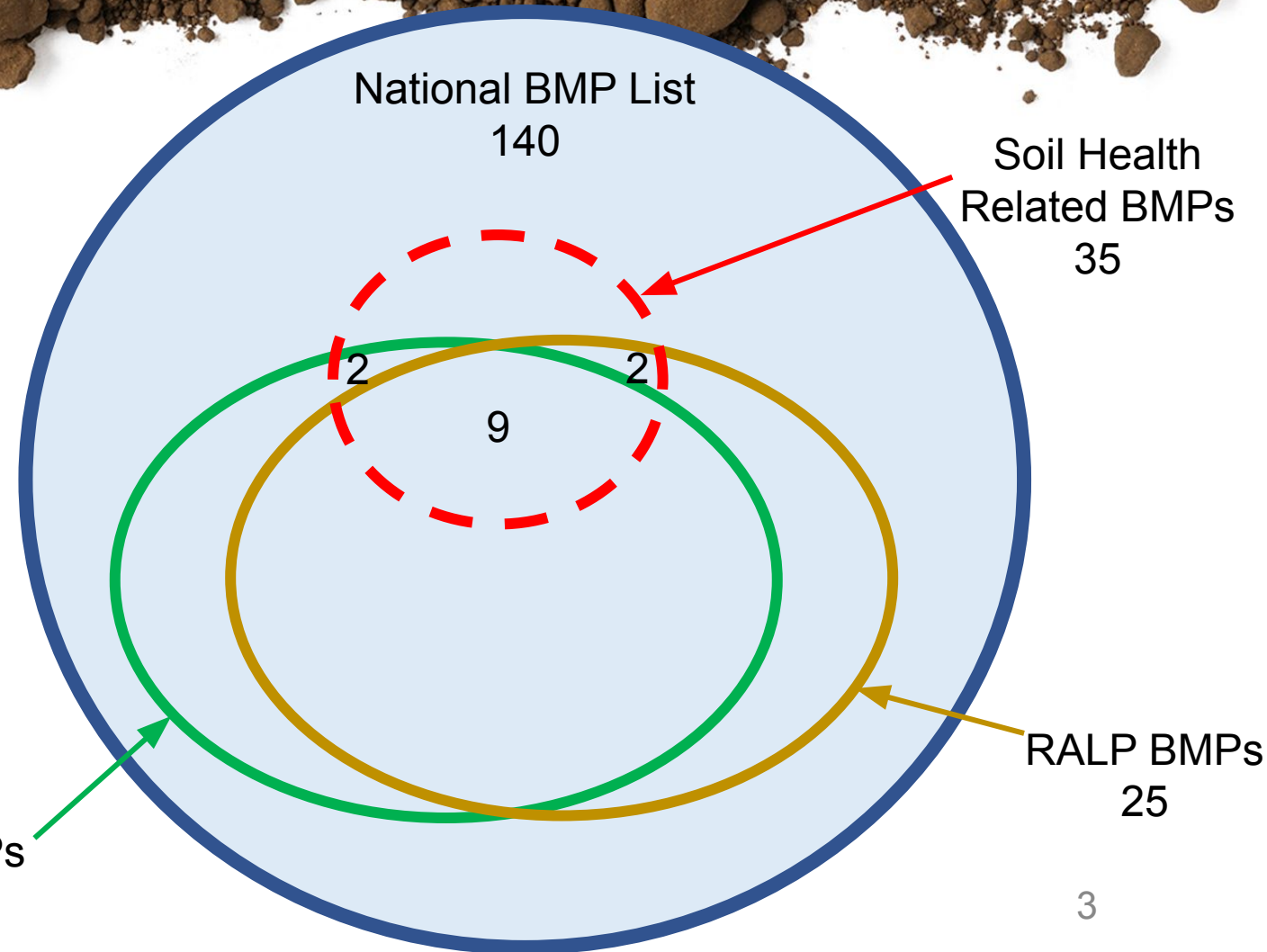
Adapting to climate change




Environmental sustainability

S-CAP: BMP Lists


- **National List** – Associated with environmental benefits from Guelph Statement
- **Priority BMPs** – best emission factors
- **Resilient Agricultural Landscapes Program (RALP)** – BMPs providing eco. goods & services; limited direct farmer benefit



S-CAP National BMP List

- 
- Master list of beneficial management practices derived through federal, provincial, & territorial consultations
 - Broadly worded for flexible implementation – multiple specific practices may fit under a single bmp
 - Aligned with environmental benefits from Guelph Statement
 - Basic Reporting Requirements
 - Research opportunities: identify & develop new bmps for inclusion on the list

S-CAP: Priority BMPs

- 
- Sub-set of the national BMP list with best emission factors
 - These bmps will be used by AAFC to estimate GHG reductions (National Target: 3-5 MT CO₂e)
 - Additional reporting on adoption rates – likely through EFP/BMP & other cost-share programs
 - Research opportunities: validating bmps & refining emission factors for B.C.
 - Opportunities for adding more bmps to the priority list.

S-CAP: Resilient Agricultural Landscapes Program

A \$250 million FPT cost-shared program as part of the SCAP, the Resilient Agricultural Landscape Program will support carbon sequestration, adaptation, and address other environmental co-benefits

Delivery Approach

- EG&S incentive payment approach (e.g. per acre payments and land use agreements).
- Existing program reference: Farmland Advantage, Delta Farmland & Wildlife Trust
- Regional flexibility to determine details

Targeted Land Use and Actions

- Maintaining and restoring grasslands and wetlands
- Enhancing riparian and on-farm wildlife areas
- Other regionally relevant agriculture practices

Expected Outcomes

- GHG reductions of 2.7Mt per year
- Improved soil health
- Increased conservation and restoration of critical wildlife habitat
- Strengthened resilience of agricultural lands
- Improved water quality

Regenerative Agriculture, Climate Change and the Environment

Regenerative agriculture is an overarching priority for the Ministry and it has many linkages to AF climate change and environment programming and services

6 Core Principles of REGENERATIVE AGRICULTURE

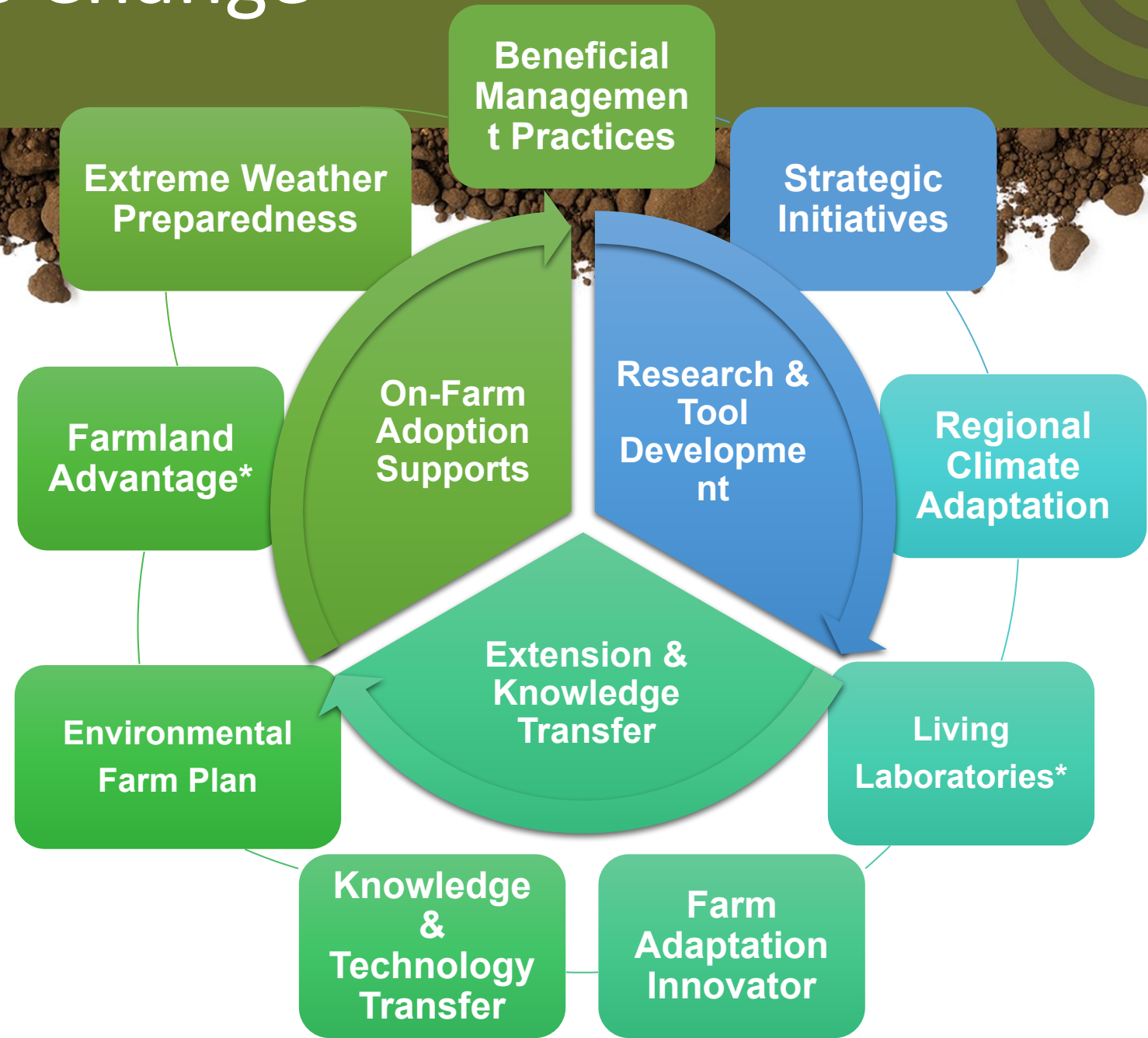




Existing Climate Change & Environment Programs

The Ministry currently supports and delivers a wide range of programs that promote:

- Research and Tool development
- Extension & Knowledge Transfer
- On-farm adoption supports





Climate Change & Environment Programs

Research and Data needs for on-farm adoption supports:

- Evolution of climate change adaptation and mitigation practices
- Regional & sector BMP adaptation

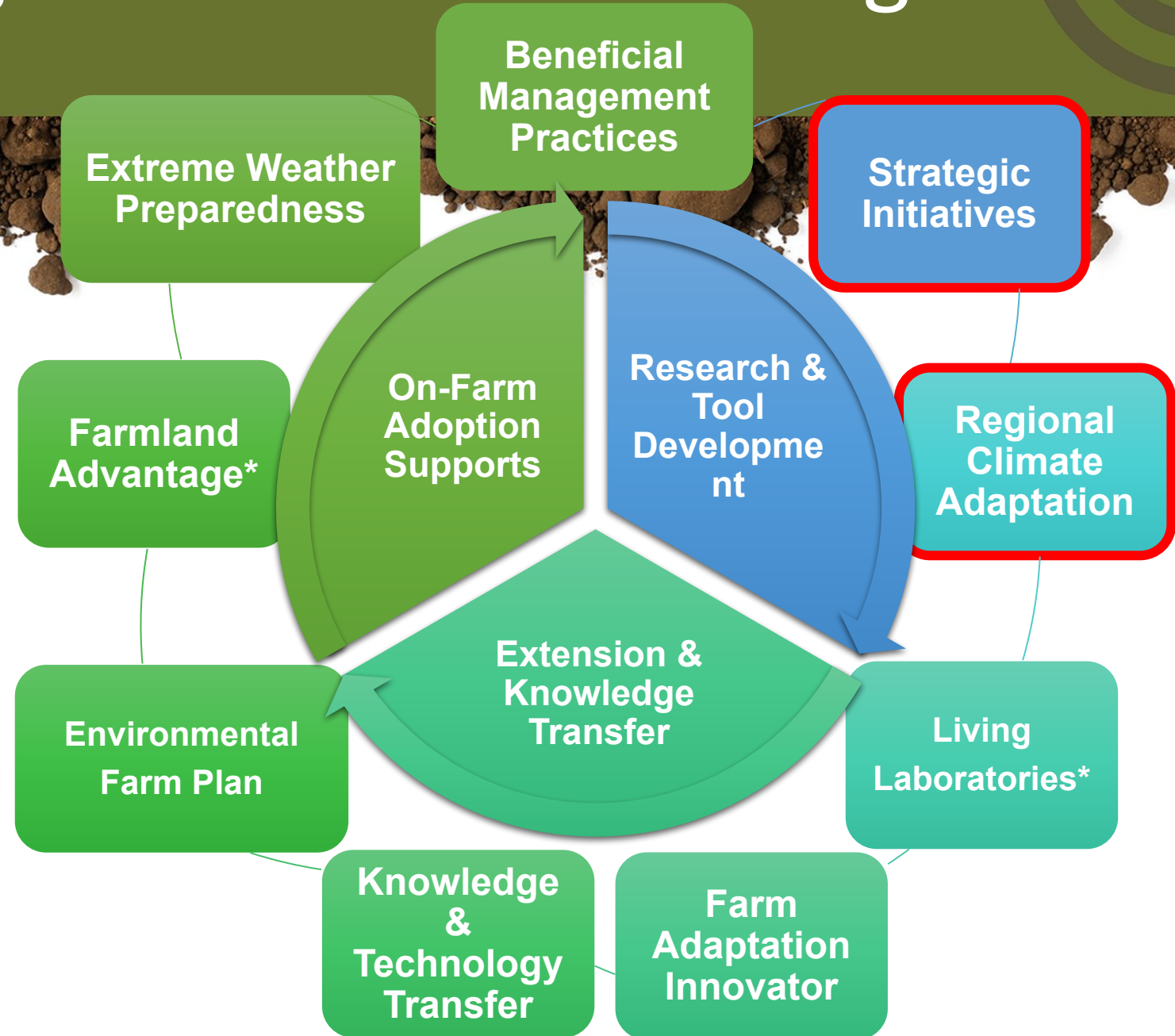




Climate Change & Environment Programs

Research and tool development:

- Decision aids: nutrient management calculator
- Technology and knowledge transfer
- Supports successful adoption of bmps

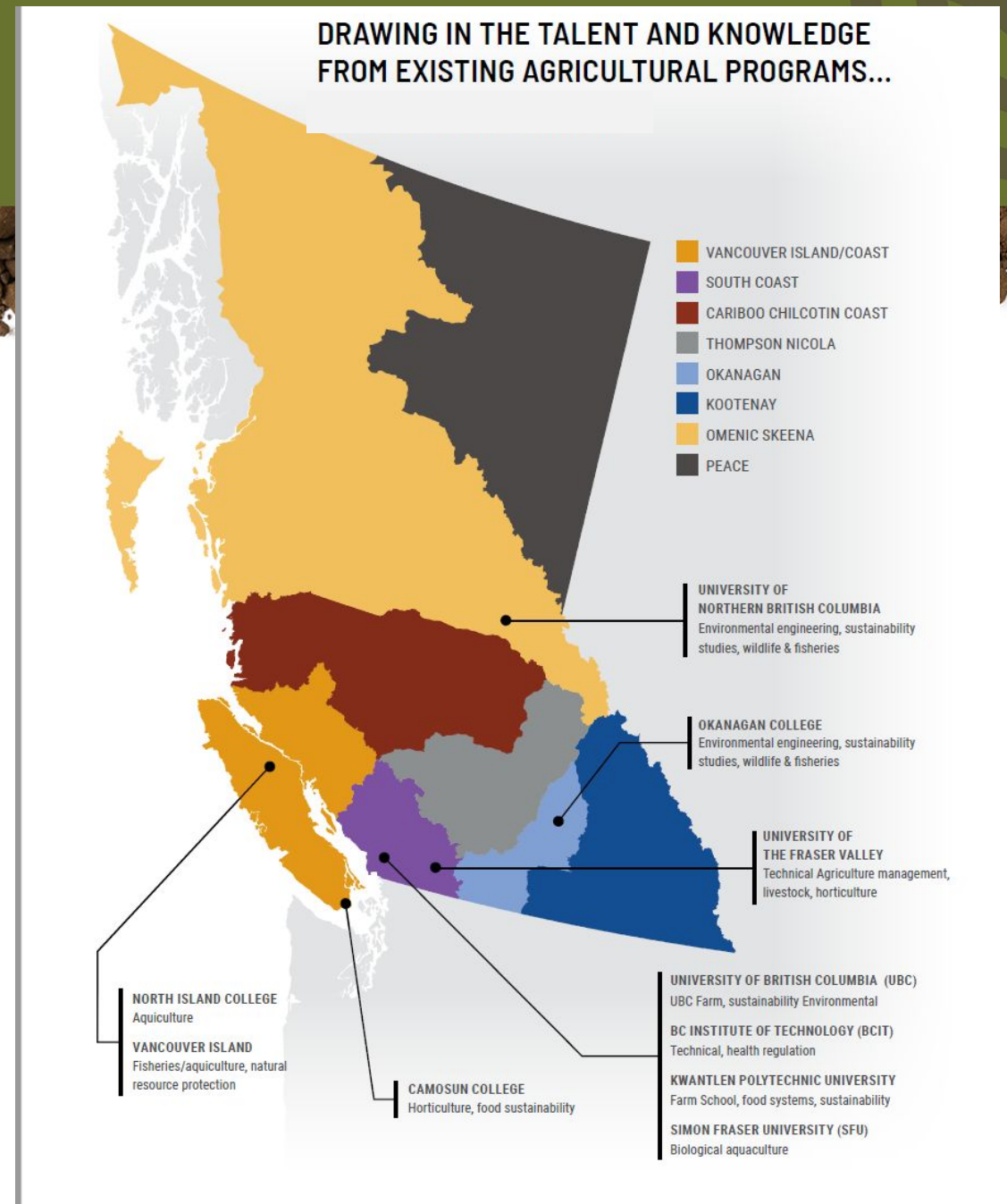


Expanding our Regional Extension Delivery Model

- Include a focus on climate mitigation, environmental sustainability, regenerative agriculture (i.e. not just on climate change adaptation)
- Increased producer participation in regional prioritization and decision making
- Shift towards producer centric applied research and extension services (e.g., on-farm demonstration and practical tool development)
- Improved external communication on climate change and environmental opportunities



Ministry of
Agriculture
and Food



Expanding our Regional Extension Delivery Model

- Include a focus on climate mitigation, environmental sustainability, regenerative agriculture (i.e. not just on climate change adaptation)

- Increased producer participation in regional prioritization and decision making

- Shift towards producer centric applied research and extension services (e.g., on-farm demonstration and practical tool development)

- Improved external communication on climate change and environmental opportunities

Balancing regional priorities with strategic & provincial priorities (ie. Emissions reductions, nutrient management, water conservation)

Applied Research / On-farm demonstrations:

- Similarities with Living Labs,
- Flexible, expansive and situationally driven
- Ground-truthing strategic initiatives (ie. Cover cropping)
- Seeing is believing: extension, learning and knowledge transfer

Potential for Using Regional Extension Model for Data Collection and Reporting

- Standard set of before/after soil metrics applied to all research and demonstration projects having impacts on soil
 - Establishing regional soil health baselines
 - Measuring bmp x region x production system interactions
 - Refined emission factors and abatement costs
 - Prioritization: Targeting bmps to where they have the greatest outcomes.
- Idea: *Soil Health Road Show - Coming to a field day near you*
 - Technology and knowledge transfer
 - Building farm partners for baselining and monitoring

More White Space



Ministry of
Agriculture
and Food

